

Архангельск (8182)63-90-72
Астана (7172)727-132
Астрахань (8512)99-46-04
Барнаул (3852)73-04-60
Белгород (4722)40-23-64
Брянск (4832)59-03-52
Владивосток (423)249-28-31
Волгоград (844)278-03-48
Вологда (8172)26-41-59
Воронеж (473)204-51-73
Екатеринбург (343)384-55-89
Иваново (4932)77-34-06

Ижевск (3412)26-03-58
Иркутск (395)279-98-46
Казань (843)206-01-48
Калининград (4012)72-03-81
Калуга (4842)92-23-67
Кемерово (3842)65-04-62
Киров (8332)68-02-04
Краснодар (861)203-40-90
Красноярск (391)204-63-61
Курск (4712)77-13-04
Липецк (4742)52-20-81

Магнитогорск (3519)55-03-13
Москва (495)268-04-70
Мурманск (8152)59-64-93
Набережные Челны (8552)20-53-41
Нижний Новгород (831)429-08-12
Новокузнецк (3843)20-46-81
Новосибирск (383)227-86-73
Омск (3812)21-46-40
Орел (4862)44-53-42
Оренбург (3532)37-68-04
Пенза (8412)22-31-16

Пермь (342)205-81-47
Ростов-на-Дону (863)308-18-15
Рязань (4912)46-61-64
Самара (846)206-03-16
Санкт-Петербург (812)309-46-40
Саратов (845)249-38-78
Севастополь (8692)22-31-93
Симферополь (3652)67-13-56
Смоленск (4812)29-41-54
Сочи (862)225-72-31
Ставрополь (8652)20-65-13

Сургут (3462)77-98-35
Тверь (4822)63-31-35
Томск (3822)98-41-53
Тула (4872)74-02-29
Тюмень (3452)66-21-18
Ульяновск (8422)24-23-59
Уфа (347)229-48-12
Хабаровск (4212)92-98-04
Челябинск (351)202-03-61
Череповец (8202)49-02-64
Ярославль (4852)69-52-93

Киргизия (996)312-96-26-47

Россия (495)268-04-70

Казахстан (772)734-952-31

<https://reliant.nt-rt.ru/> || rtw@nt-rt.ru




CORIOLIS MASS FLOWMETER



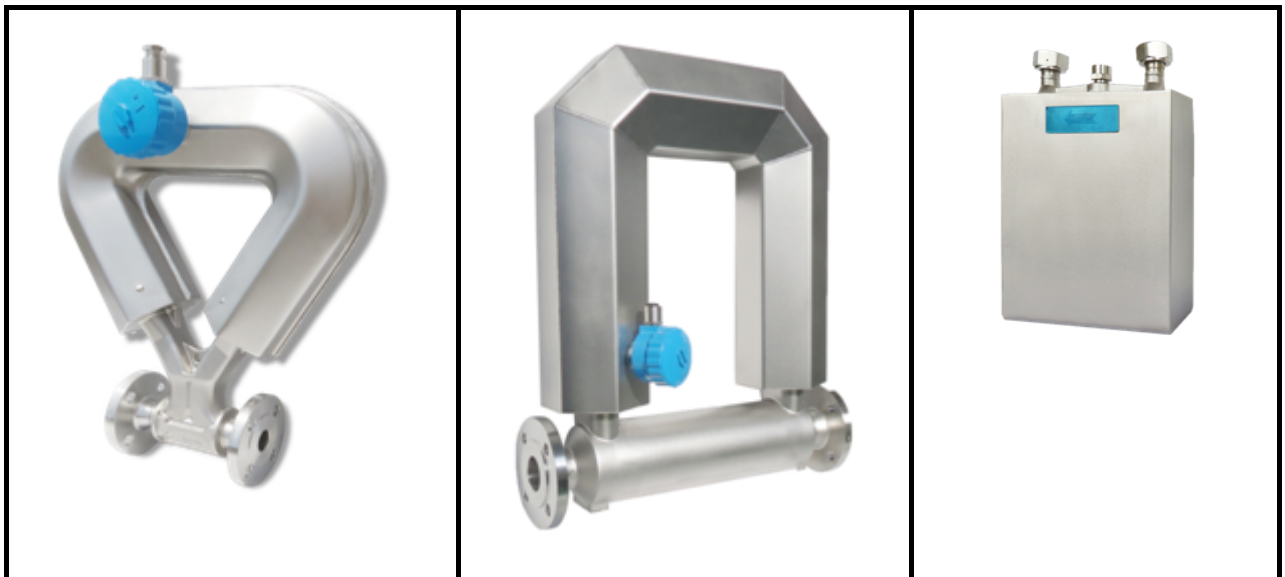
Overview

Reliant Coriolis mass flowmeter (RCMF) provides best mass flow, density and temperature measurement performance, and also calculate volume flow, total flow and fluid composition in real-time. Currently it has 2 Serials 3 styles available which are TB, UB, VB, TA UA and CNG types; meanwhile each series has its own compact and remote meters.

Coriolis Mass Flowmeter

		
<p>VB Type</p> <ul style="list-style-type: none"> • For Low Flows • DN2, 5 and 10 • Accuracy up to +/-0.1% • -40 to +662°F (-40 to +350°C) • ≤25MPa (≤250Bar) • Tube Material-316 <p>Stainless Steel, Alloy C22</p> <ul style="list-style-type: none"> • Ex-mark: ATEX 	<p>UB Type</p> <ul style="list-style-type: none"> • Universal Use • DN1 and 40 to 250 • Accuracy up to +/-0.1% • -40 to +662°F (-40 to +350°C) • ≤25MPa (≤250Bar) • Tube Material-316 <p>Stainless Steel, Alloy C22</p> <ul style="list-style-type: none"> • Ex-mark: ATEX 	<p>TB Type</p> <ul style="list-style-type: none"> • Special CNG Use • DN15,20, 25 • Accuracy up to +/-0.1% • -40 to +662°F (-40 to +350°C) • ≤40MPa (≤400Bar) • Tube Material-316 <p>Stainless Steel</p> <ul style="list-style-type: none"> • Ex-mark: ATEX

Coriolis Mass Flowmeter



<p>VA Type</p> <ul style="list-style-type: none"> • Universal Use • DN6 to 40 • Accuracy up to +/-0.1% • -196 to +200°C (-320.8 to +392°F) • ≤25MPa (≤250Bar) • Tube Material-316 <p>Stainless Steel, Alloy C22</p> <ul style="list-style-type: none"> • Ex-mark: ATEX 	<p>UA Type</p> <ul style="list-style-type: none"> • Universal Use • DN50 to 200 • Accuracy up to +/-0.1% • -196 to +200°C (-320.8 to +392°F) • ≤25MPa (≤250Bar) • Tube Material-316 <p>Stainless Steel, Alloy C22</p> <ul style="list-style-type: none"> • Ex-mark: ATEX 	<p>CNG Type</p> <ul style="list-style-type: none"> • Special CNG Use • DN15,20, 25 • Accuracy up to +/-0.1% • -196 to +200°C (-320.8 to +392°F) • ≤40MPa (≤400Bar) • Tube Material-316 <p>Stainless Steel</p> <ul style="list-style-type: none"> • Ex-mark: ATEX
---	---	---

Coriolis Mass Flowmeter Transmitter



T1 Type

- Power Supply: Self-switching 22VDC/AC to 245VDC/AC, 50/60Hz
- Signal Output & Communication: Analog (4 to 20mA) and Pulse/Frequency (0 to 10kHz), RS485, HART, Modbus, Profibus, Fieldbus
- Variable: Mass Flow, Volume Flow, Mass Total, Volume Total, Temperature, Density, Standard Flow, and Standard Total
- Batch Control: Optional
- Ambient Temperature: -40 to +55°C (-40 to 131°F)
- Conduit Connection: M20×1.5, 1/2"NPT (optional)

F32 Type

- Power Supply: 85 to 265VAC, 50/60Hz; Fuse: T1A/250AC or 12 to 24VDC (±5%)
- Signal Output & Communication: RS485, HART(optional), Analog (4 to 20mA) and Pulse/Frequency (0 to 10kHz)
- Variable: Mass Flow, Volume Flow, Mass Total, Volume Total, Temperature, Density, Standard Flow, and Standard Total
- Ambient Temperature: -40 to +55°C (-40 to 131°F)
- Conduit Connection: M20×1.5, 1/2"NPT (optional)

Manufacture and Test Equipment

High Pressure gas test bench

We have only a few the high-pressure gas calibration system and stability testing system for high-pressure flowmeter test in the CNG flowmeter scope, to ensure every flowmeter pass the test before delivery out.



Liquid Nitrogen Calibration Bench

We are the first company build the cryogenic (liquid nitrogen, $-196\text{ }^{\circ}\text{C}$) calibration system and stability testing system for Cryogenic flow meter calibration and stability testing, and each flowmeter will pass the test before Ex-factory.





High-vacuum brazing furnace that could effectively reduce the stress force of the welding process. The temperature up to 1200 °C, final vacuum 1×10^{-5} .



Precision CNC Pipe Bending Machine



Laser Welding Equipment



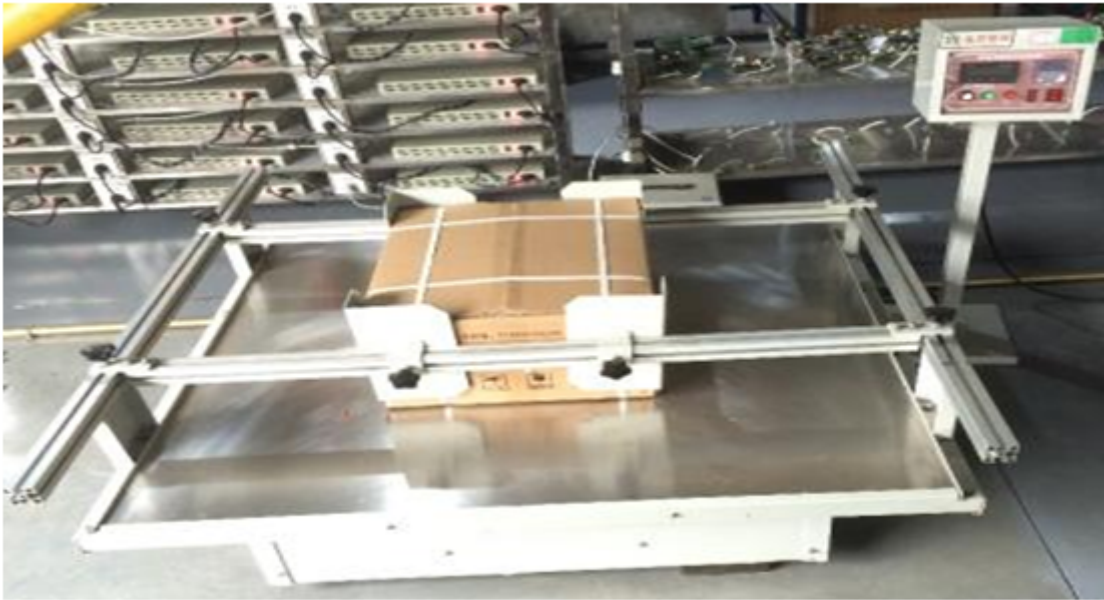
Automatic Welding Machine



3-dimensional Measurement Machine



Vibration Test Bench



High and Low Temp. Test Machine



Applications

Process fluid	Typical application	Industries
<ul style="list-style-type: none"> • Liquid • Gas • Slurry 	<ul style="list-style-type: none"> • Custody Transfer • Reactor Feed Ratio • Density Measurement • Batch Control 	<ul style="list-style-type: none"> • Chemicals • Food & Beverages • Machinery • Minerals & Mining • Oil & Gas • Pharmaceuticals • Power Plant • Pulp & Paper • Water • Waste Water

Copyright 2021 All rights reserved. Reliant Instrument Inc

Архангельск (8182)63-90-72
Астана (7172)727-132
Астрахань (8512)99-46-04
Барнаул (3852)73-04-60
Белгород (4722)40-23-64
Брянск (4832)59-03-52
Владивосток (423)249-28-31
Волгоград (844)278-03-48
Вологда (8172)26-41-59
Воронеж (473)204-51-73
Екатеринбург (343)384-55-89
Иваново (4932)77-34-06

Ижевск (3412)26-03-58
Иркутск (395)279-98-46
Казань (843)206-01-48
Калининград (4012)72-03-81
Калуга (4842)92-23-67
Кемерово (3842)65-04-62
Киров (8332)68-02-04
Краснодар (861)203-40-90
Красноярск (391)204-63-61
Курск (4712)77-13-04
Липецк (4742)52-20-81

Магнитогорск (3519)55-03-13
Москва (495)268-04-70
Мурманск (8152)59-64-93
Набережные Челны (8552)20-53-41
Нижний Новгород (831)429-08-12
Новокузнецк (3843)20-46-81
Новосибирск (383)227-86-73
Омск (3812)21-46-40
Орел (4862)44-53-42
Оренбург (3532)37-68-04
Пенза (8412)22-31-16

Пермь (342)205-81-47
Ростов-на-Дону (863)308-18-15
Рязань (4912)46-61-64
Самара (846)206-03-16
Санкт-Петербург (812)309-46-40
Саратов (845)249-38-78
Севастополь (8692)22-31-93
Симферополь (3652)67-13-56
Смоленск (4812)29-41-54
Сочи (862)225-72-31
Ставрополь (8652)20-65-13

Сургут (3462)77-98-35
Тверь (4822)63-31-35
Томск (3822)98-41-53
Тула (4872)74-02-29
Тюмень (3452)66-21-18
Ульяновск (8422)24-23-59
Уфа (347)229-48-12
Хабаровск (4212)92-98-04
Челябинск (351)202-03-61
Череповец (8202)49-02-64
Ярославль (4852)69-52-93

Киргизия (996)312-96-26-47

Россия (495)268-04-70

Казахстан (772)734-952-31

<https://reliant.nt-rt.ru/> || rtw@nt-rt.ru